



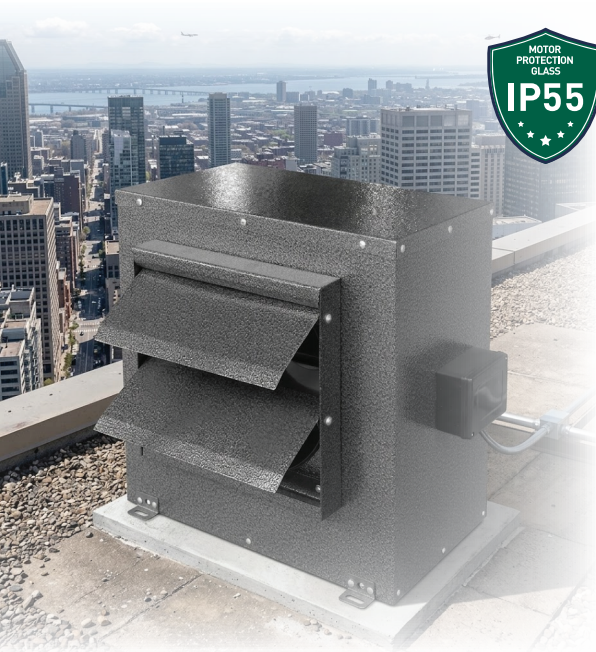
GREENBREEZE[®]



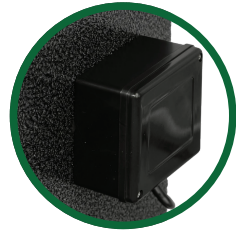
GBC

Roof-Mounted Cabinet Fans

The **GREENBREEZE Roof-Mounted Cabinet Fans** are engineered with a compact, space-saving design to meet the rigorous demands of modern residential, commercial, and industrial environments.



High-Efficiency Centrifugal Impeller

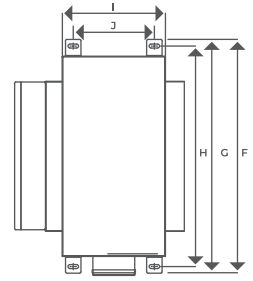
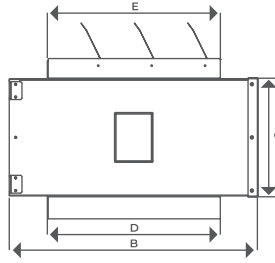
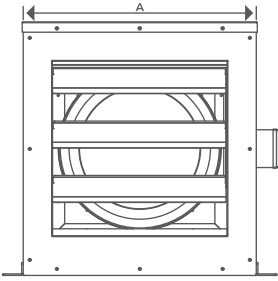


IP55 External Connection Box

Key Features:

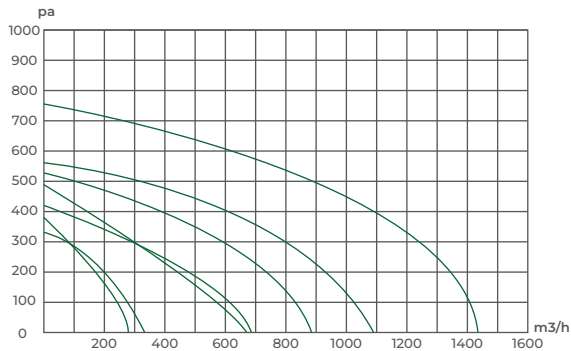
- **Robust Construction:** Manufactured from heavy-gauge sheet steel.
- **Weather Resistance:** The structure is stripped steel, painted with polyester powder for superior resistance to harsh weather.
- **Acoustic Insulation:** Internally lined with 10mm thick melamine foam to ensure low noise emissions.
- **Optimized Airflow:** Direction flaps are optimized to reduce internal turbulence, while factory-installed back draft dampers prevent reverse airflow.
- **High-Efficiency Motors:** Equipped with high-efficient ball bearing motors featuring Class F insulation.
- **Eco-Friendly Components:** High-efficiency backward centrifugal impellers are made from recycled plastics.

Technical Data:



Model	A	B	C	D	E	F	G	H	I	J
GBC100	334	340	184	115	115	415	410	380	169	134
GBC125	334	340	184	140	140	415	410	380	169	134
GBC150	404	410	254	165	165	485	480	450	239	204
GBC165	404	410	254	175	175	485	480	450	239	204
GBC200	404	410	234	215	215	485	480	450	219	184
GBC250	404	410	234	265	265	485	480	450	219	184
GBC315	454	490	234	340	340	535	530	500	219	184

S.No	Model	Power Supply (V/Hz)	Power (W)	Current (A)	Speed (rpm)	Airflow (m ³ /h)	Sound Pressure (dB(A))		Weight (kg)
							Inlet	Outlet	
A	GBC100	220-240/50	66	0.3	2400	300	49	44	8.4
B	GBC125	220-240/50	67	0.3	2400	390	55	51	8.5
C	GBC150	220-240/50	120	0.5	2400	740	60	56	13.3
D	GBC165	229-240/50	115	0.5	2500	745	60	57	13.4
E	GBC200	220-240/50	185	8	2550	1030	64	61	14.1
F	GBC250	220-240/50	208	9	2550	1190	66	63	14.4
G	GBC315	220-240/50	283	1.1	2550	1550	68	65	17.8



GREENBREEZE retains the sole right to change product design and specifications without notice. Images presented herein may differ significantly from the delivered products. Information contained herein is for general consideration only as our products are subject to change.



GREENBREEZE Unipessoal LDA

Rua Da Praia Azul, Silveira

Lisbon, Portugal

Email: info@green-breeze.eu

www.green-breeze.eu



Marketed By:

Cannelle Holdings FZE

P.O. Box 261660, Jebel Ali Free Zone

Dubai, United Arab Emirates

www.cannelleholdings.com